

Bath Installation Guide



Dear Purchaser/Installer

You are about to install a Clearlite Bathrooms product. The unit that you have purchased has been designed and manufactured to the highest possible standards. Please read and ensure that you fully understand the installation principles and how they apply to your unit. Bear in mind that useful old adage - "measure twice and cut once".

Please note that prior to wrapping, this product was cleaned and polished under bright lights.

For your own peace of mind please unwrap and check the product carefully on receipt. This is a precaution to ensure that the product has not been damaged by handling or transport.

Whilst we at Clearlite Bathrooms take great pride in producing what we consider the best products available, we cannot accept responsibility for damage that may occur in handling or installation.

Please read these Instructions carefully

The following tools and materials maybe required

- Spirit level & Tape Measure
- Hammer and/or Drill
- Pencil
- Saw
- Nails and/or Screws
- Timber 75mm x 50mm & 50mm x 50mm
- Construction type Glue e.g. 'Sika Nailbond'
- 18mm timber panel.

If the bath you have purchased has TWO small wooden stapling battens attached to the underside of the bath rim please remove and proceed as follows.

Installation

A qualified tradesman or installer is recommended.

All baths must be supported around their top perimeter and at regular intervals under the bath floor. To support the bath floor, pack the underside with an uncompressible material such as a mortar / concrete slurry (see fig 1) or slats of timber cut to the correct height and set at intervals no greater than 200mm (see fig 2). If using slats, glue the slats to the bath and floor with a construction adhesive.

(Special Note: If installing a Steel bath only use a mortar or concrete slurry to support the floor. The use of timber slats is not recommended for this type of bath)

Level bath from the perimeter flange of the bath (lengthwise and across) – DO NOT LEVEL BATH FLOOR. The floor of the bath will always have a slope towards the waste to allow drainage

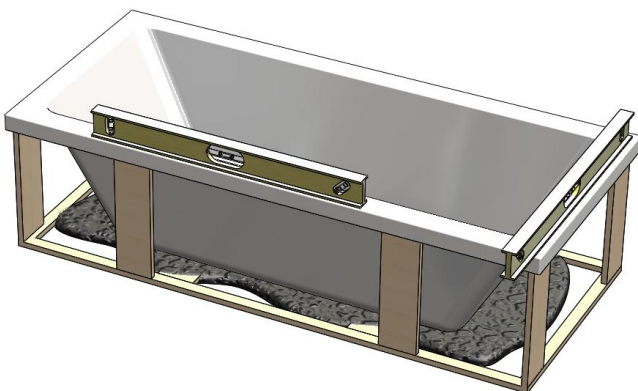


Fig 1

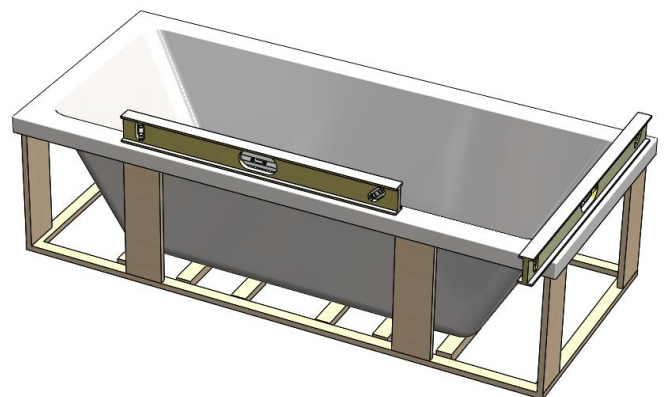
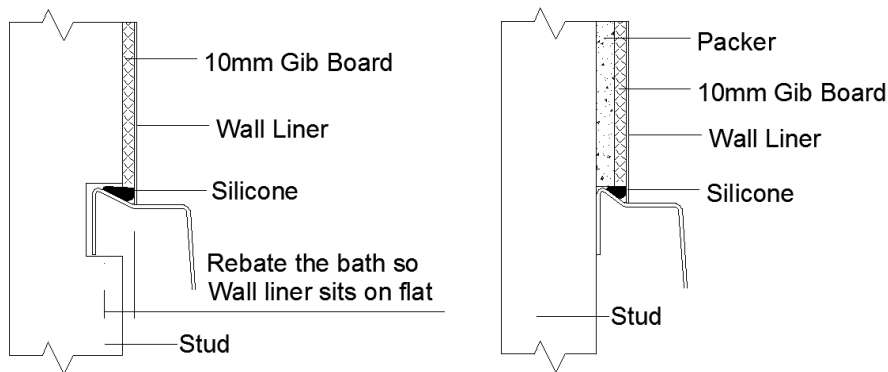


Fig 2

Warranty will be void if the bath is not adequately supported

Some baths may require rebating into the Studs to enable any wall linings to sit flat onto the bath flange. Alternatively the walls may be packed out to achieve the same result



Wall Lining Installation

Before fitting the lining, ensure both surfaces to be adhered are clean, dry and grease free. Walls must not be Gib Stopped, painted or sealed. Apply a bead of silicone sealant along the upstand of the bath.

All Plumbing requirements must be completed before the wall installation begins

Starting 10mm in from the edges of the liner apply 5-6 mm beads of Sika Showerbond adhesive in vertical lines at 100 mm centres onto substrate.

Place lining onto wall within **15 minutes** and firmly press the entire sheet with your hands so that **full contact** is made with all beads of adhesive.

Poor adhesion may occur if these instructions are not followed. Please refer to adhesive tube for manufacturer's recommendations.

You must use the "Sika Showerbond" adhesive supplied.

Do not use any other adhesives – your warranty will be voided

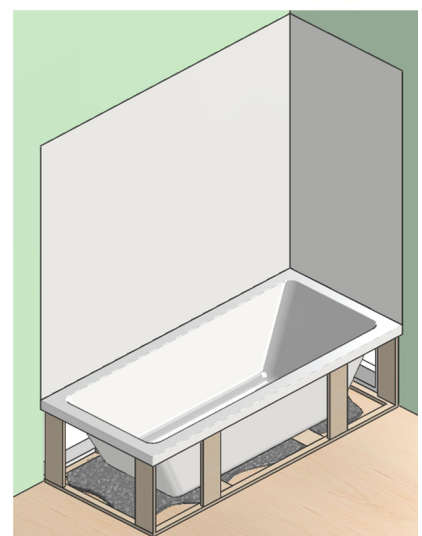
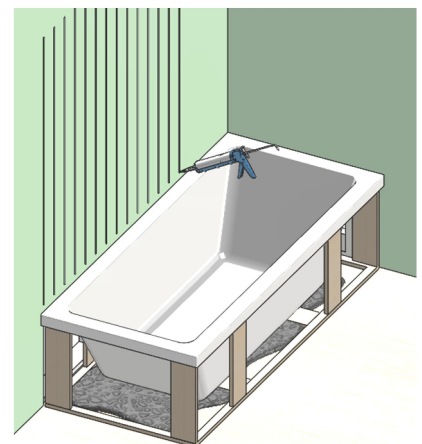
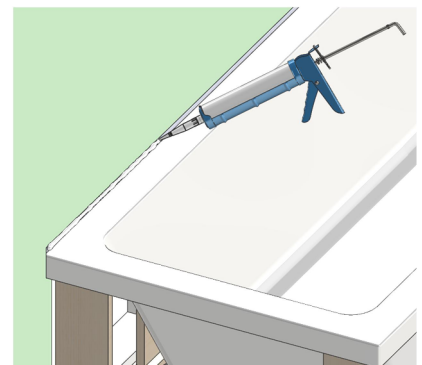
Do not apply blobs of adhesive. This may cause unsightly undulations and buckles in the lining.

Finally, clean up any silicone that may have been forced out during liner installation.

Allow the adhesives and sealant to cure for a minimum of 24 hours

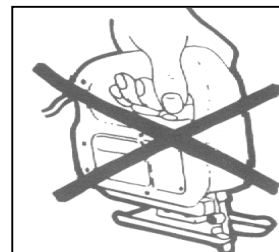
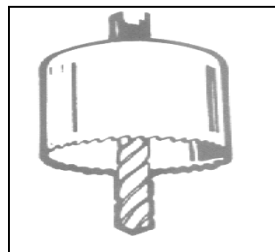
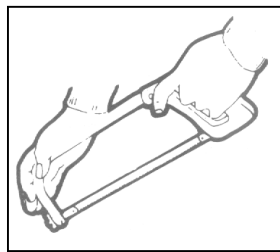
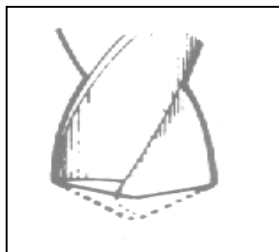


In line with BRANZ recommendation, we suggest that a sealant be applied to the top of the acrylic liner. This is to prevent any moisture penetrating down behind the lining.



Cutting & Drilling

Use a fine tooth hacksaw very carefully if the acrylic needs to be cut. Smooth edges with fine 'wet and dry' glass paper and burnish with an abrasive cleaner such as 'Brasso'. Small holes can be drilled with a twist drill, BUT the cutting edge should be backed off with an oilstone to prevent 'grabbing'. Use a fine hole saw for larger holes.



Care & Maintenance

Always clean your bath-ware product immediately after every use. The best results are obtained by the use of hot, slightly soapy water followed by a good rinse and dry polish. Clearlite Bathrooms recommend 'Vibrance Acrylic Surface Cleaner' available through most Bathroomware retailers.

Acrylic has excellent resistance to most things it is likely to come into contact with in the bathroom. However if it should be exposed to a naked flame, cigarettes or strong solvents they should be removed immediately.

To maintain your bath-ware product it is recommended you adopt the following:

The temperature of the supply water should not exceed 55 degrees Celsius.

When filling the product start with cold water to allow the product to gradually adapt to the temperature.

To maintain your products good looks, do not use coarse abrasive cleaners or cleaners containing alcohol.

After use wipe with damp sponge or cloth around the water line to remove any build up of body fats or soap residue.

If by accident your product gets scratched it may be restored by using a fine polish such as Brasso. If this will not remove the scratch it can be cut back with a very fine wet and dry paper used liberally with water. After removing the scratch restore gloss with Brasso.

Look after your Clearlite product and it will give you years of enjoyable service.